

# Building or Renovating an ASC?

## *Workflow Design Considerations to Maximize Efficiency*

James Story RN, MBA  
Administrative Director of Operations  
St. Vincent's Health System/Ascension

---

Dan Henderson  
CEO-Founder - Medix LLC  
Founder - Proformex

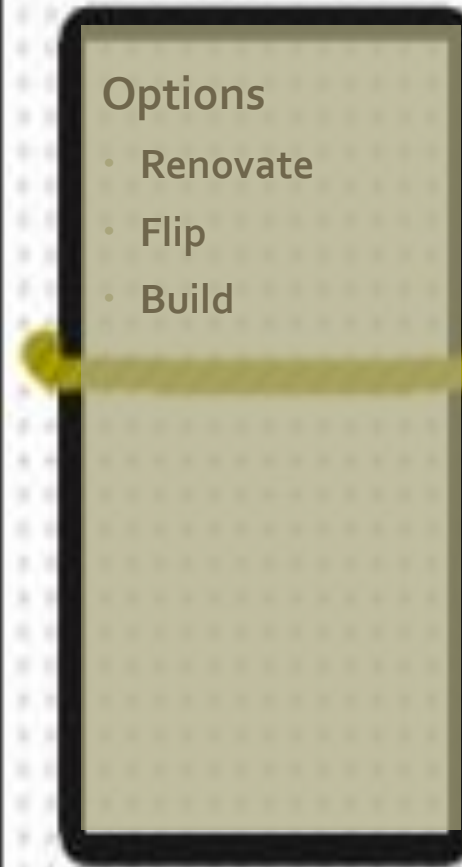


# Market Pressures



## Push vs Pull

- Payers are pushing both providers and hospitals to utilize lower cost environments
- Physicians are pulling more of their ASC eligible case to freestanding ASCs
- Hospitals are trying to hold on to outpatient volumes for as long as they can



## Options

- Renovate
- Flip
- Build



[This Photo](#) by Unknown Author is licensed under [CCBY-SA-NC](#)

# PUSH

# PULL

# Project Work Plan



SPECIFIC  
TASKS



CRITICAL  
PATHWAYS




OWNERSHIP

# Sample Project Work Plan

								Issues Log
<b>SAMPLE</b>				Task Status:				
<b>Ambulatory Surgery Center</b>				Complete				
Project Plan				In Process				
				At Risk				
				Overdue				
Item No.	Activity	Expected Duration	Status	Start Date	Target Resolution Date	Completion Date	Responsible Party	Comments
1.0	Credentiailling	90 Days	At Risk	6/15/2020	10/1/2020		John Doe	
1.24								
2.0	Finance							
2.1								
4.0	Construction							
4.7								
5.0	Equipment/Minor							
5.1								
6.0	Operations Planning							
6.19								
7.0	Staffing Plan							
7.13								
8.0	Human Resources							
8.1	Post Positions							
8.2	OR RN							
8.3	Scrubt Tech							
8.4	Pre-OP/PACU RN							
8.5	Pre-OP/PACU RN							

# Interprofessional Advisory Teams

- 
- Management Committee (Board)
  - Physicians (By Specialty)
  - Nursing (By Area)
  - Anesthesia

# THE BUILDING AND SPACE



PLAN



RIGHT SIZING



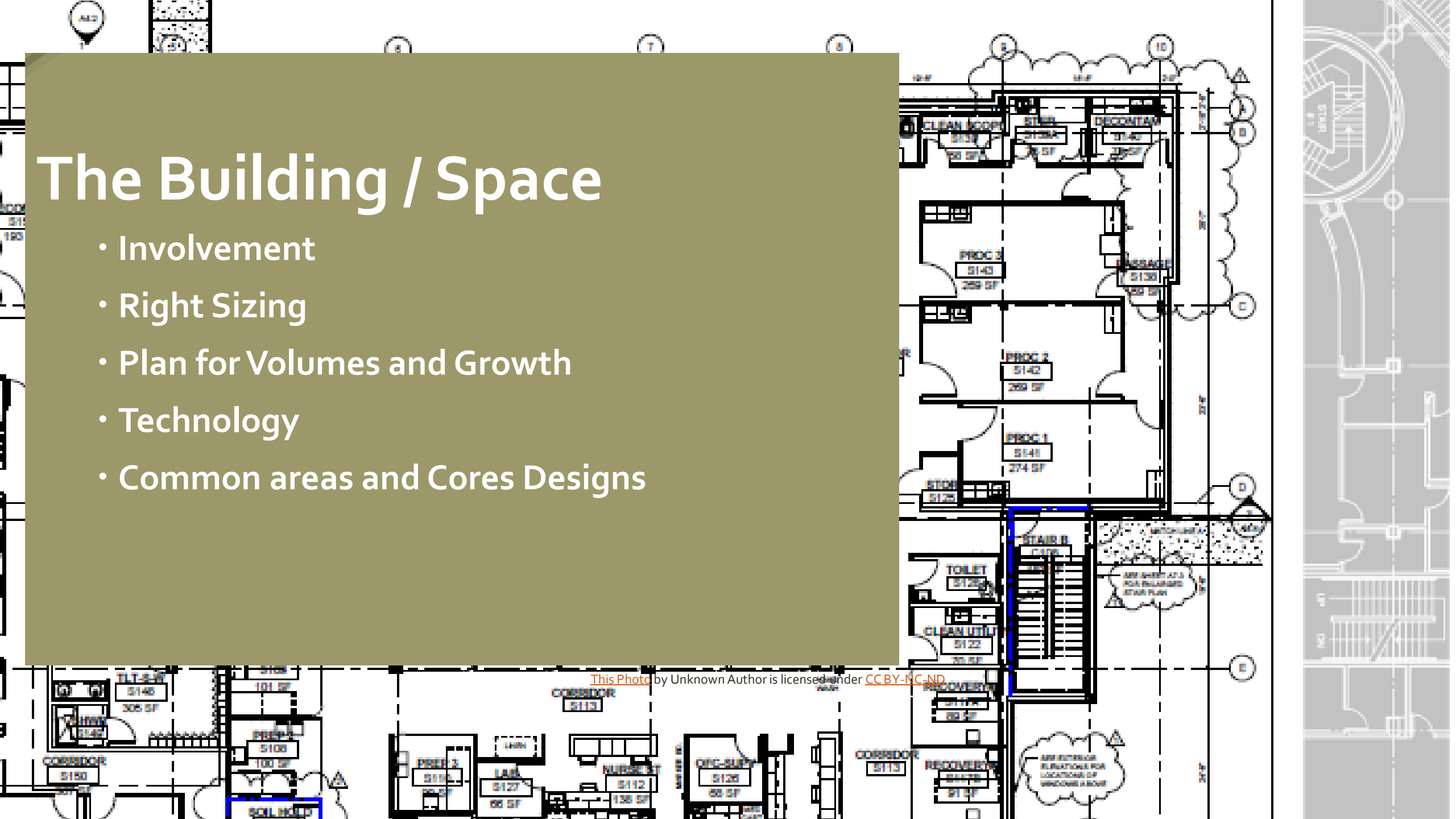
DESIGN AND  
BUILD



EQUIPMENT  
PLANNING

# The Building / Space

- Involvement
- Right Sizing
- Plan for Volumes and Growth
- Technology
- Common areas and Cores Designs



# Equipment Planning

## Hiring an Equipment Planner

- Scope Services
- Why Hire an Equipment Planner?
- When Do you Hire an Equipment Planner?



# Equipment Planning

## Equipment Timeline for the Project

- **Deadlines for Decisions for each Category**
- **Having a Single Source to Maintain the Schedule for Equipment**

# Experience and Expertise

Operating  
Models

Floor Plan  
Design

Equipment  
Acquisitions

Revenue  
Cycle



The background is a collage of three images. The top-left image shows a group of people in a meeting, with a semi-transparent olive-green overlay. The top-right image shows a modern building facade with a grid of windows. The bottom image shows a view from a window looking out onto a residential area with trees and buildings.

# Thank you

**James Story**  
**[jamesmstory73@gmail.com](mailto:jamesmstory73@gmail.com)**

**Dan Henderson**  
**[dhenderson@medixeq.com](mailto:dhenderson@medixeq.com)**